



**QUICK-STEP®**

FLOOR DESIGNERS



# **QUICK-STEP LAMINATE BULLNOSE STAIR COVERS**

Technical Data, Installation & Maintenance

## General Information

Creating an elegant staircase that matches the rest of your interior is straightforward with our Quick-Step Laminate Stair Covers. You can match them with the design of your Quick-Step Laminate floor and they are scratch and wear resistant, water-resistant, easy to clean and easily installed. It's without a doubt the most efficient way to renovate your stairs.

### Suitable for:

Staircases that have an existing squared bullnose of maximum 42mm high or staircases that have 90° squared steps.



### Colour-matched staircase

Finish the riser with an additional cut-to-size floor panel for a full colour-matched staircase.

### Staircase with painted risers

Paint the risers with a contrasting colour to accentuate your staircase

## Features

Lift your stair to the next level! With our Laminate Stair Covers, you'll have a total makeover in no time.

### Made from our floor planks

Therefore we can guarantee the same benefits as our floors.

### Identical colour match

Since the Laminate Stair Covers are made out of our Laminate floors, the Stair Covers match your floor perfectly.

### Scratch and wear resistant

Its ultra-strong core and unique top layer help protect against stains, scratches and impact damage.

### Easy to install

Easily install the Laminate Stair Covers on your existing staircase with a strong construction adhesive.



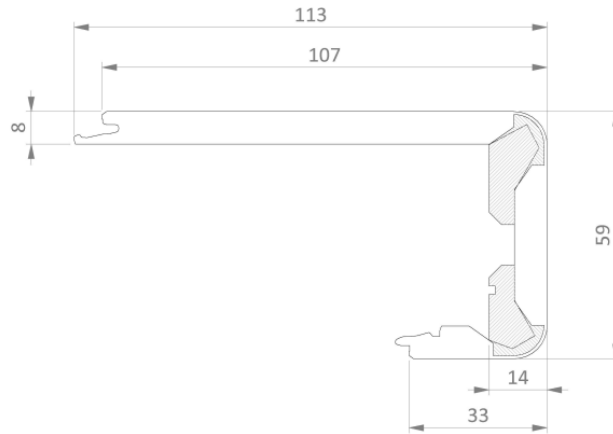
**Find your perfectly matched stair cover**

**Quick-Step Classic**

Order Code	Dimensions	Description	Composition
QSSTRBCL(-)	1150 x 113 x 59mm	2 x Colour-matched laminate bullnose stair covers	HDF & glue

**Quick-Step Impressive**

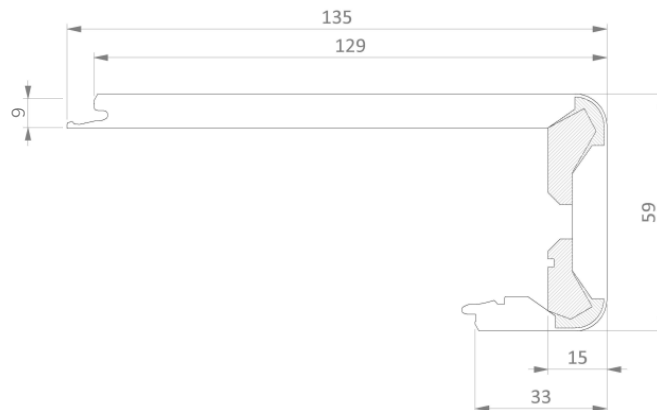
Order Code	Dimensions	Description	Composition
QSSTRBIM(-)	1330 x 113 x 59mm	2 x Colour-matched laminate bullnose stair covers	HDF & glue



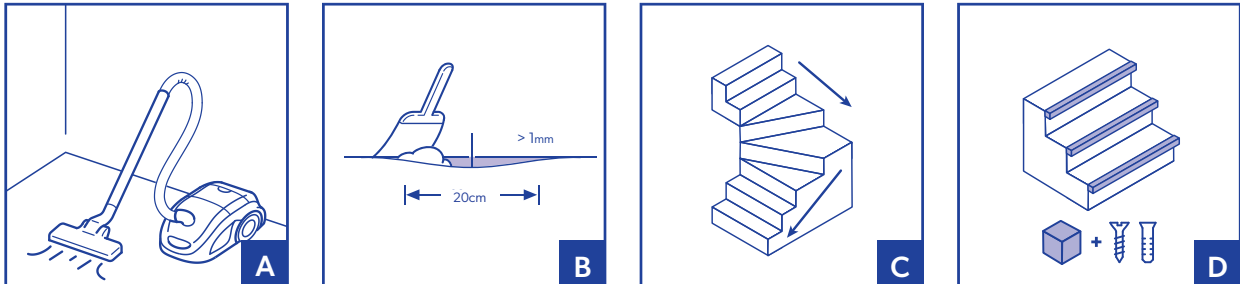
**Quick-Step Perspective Nature\***

Order Code	Dimensions	Description	Composition
QSSTRBSIG(-)	1330 x 135 x 59mm	2 x Colour-matched laminate bullnose stair covers	HDF & glue

*\*Please note, as Perspective Nature is an exclusive Oceania range, these will be branded 'Capture' to follow Europe and assist in greater sustainability.*



## Preparation



1. The staircovers are designed for closed stairs with risers, with a maximum width of 1300mm (1100mm for Classic) in a standard residential environment. For stair widths larger than this, a join would be required in the cover.
2. Painting the sides, risers or seams can be done before installing the Laminate Stair Cover.
3. The floor and room temperature needs to be maintained prior to, during and for at least 48 hours after the installation is completed. Installation should ideally be performed between 15°-35°C and a relative humidity of RH 30%-75%. Cut out and preserve the label on the box as this information contains the product identity.
4. Remove all dirt, dust and grease from the stair **(A)**. Any unevenness of more than 1mm over a length of 20cm must be levelled out **(B)**, but we advise levelling out the full stairbase to obtain the best results. Bumps should be removed by sanding or scraping.
5. Ensure that the Laminate Stair Cover is fully supported. Use a cut-off to verify. If you have a turn in your stairs, take into account the width of the turned step **(C)**.
6. Start from the top and work your way down. Always perform a dry fit before gluing the Laminate Stair Covers.
7. When cutting to size, to minimise chipping, ensure the blade teeth enter the face side first.
8. If the stair has no bullnose of its own, create a bullnose yourself using wooden packers **(D)**. Use wooden bars, screws and plugs to create a bullnose. The wooden bars should be 38 x 30mm for painted risers and 38 x 40mm for colour matched risers.
9. Aside from the Laminate Stair Covers and matching flooring planks, you will need:
  - Construction adhesive, coloured flexible silicone & caulking gun
  - Tape measure or folding ruler, pencil, tape, wood glue for longer bullnoses, spare blades & tool of your choice to measure angles (e.g.. Pivot Square)
  - Crosscut and plunge saw that can cut through the 60mm Stair Cover
  - Multitool (mind the thickness of the stair cover, be sure to use a compatible plunge saw and a new saw blade)

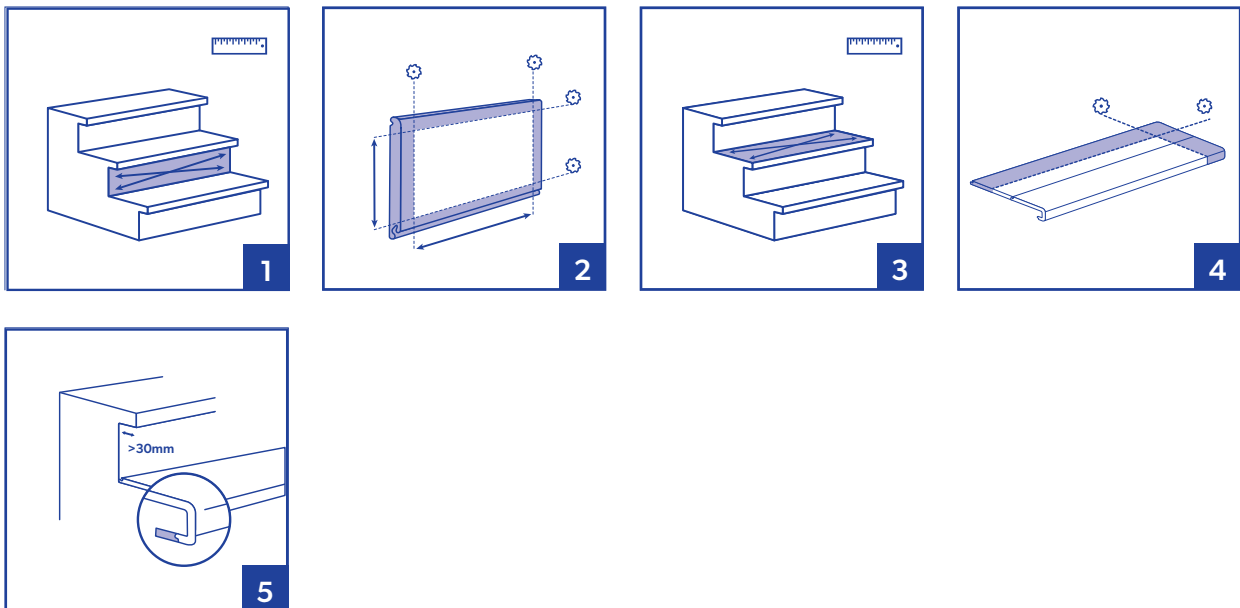
## Installation

Below is a list of the installation steps to obtain a correct installation of a fully colour-matched staircase. There are video resources available on the official Quick-Step Youtube channel [www.youtube.com/@QuickStepFloors](http://www.youtube.com/@QuickStepFloors).

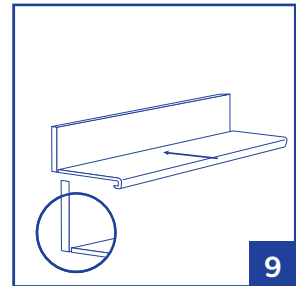
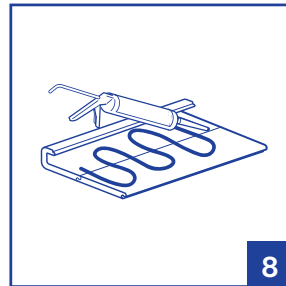
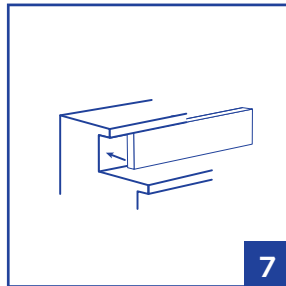
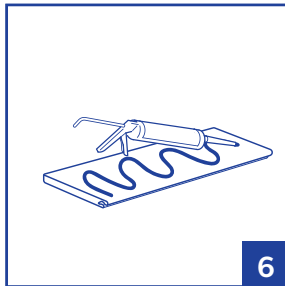


**IMPORTANT:** Ensure appropriate expansion is always kept when installing the top step cover to the landing floor raft. This can be achieved by using an incizo between the stair cover and the first installed plank, or using the incizo as the stair nose for the top step. You can reduce the tread width of the stair cover as required to achieve the best finish for the space. Please allow for compensations in height due to the addition of the underlay.

If the landing area is less than 4m<sup>2</sup> then it's possible to install the stair cover without the need for expansion provided this is the only edge that is pinned to the floor, a minimum of 10mm perimeter expansion must be allowed for throughout the rest of the flooring installation.



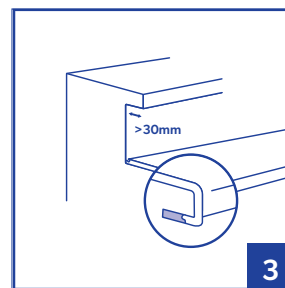
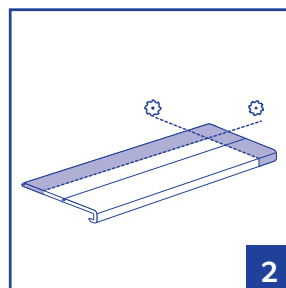
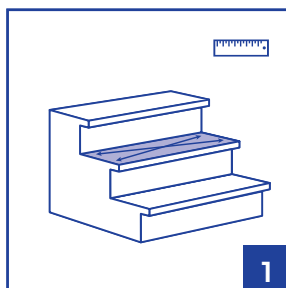
1. Risers (vertical side): Measure the exact height and width of each riser
2. To saw a floor plank to size, start measuring from the groove on the long side. Also saw off all other click profiles.
3. Tread (horizontal side): Measure the exact shape of each step.
4. Click together a Stair Cover and a Laminate plank. Saw the full Laminate Stair Cover to size.  
TIP: chipping can be masked by installing the cut edge under the riser. Use the factory made edge at the groove side of the plank as the bottom of the riser. Spacers help maintain the riser in place during installation
5. If the bullnose stands out more than 30mm from the riser, an additional plank can be clicked in. We recommend gluing the two planks together using PVA or wood glue, alternatively, tape these two parts together on the backside.



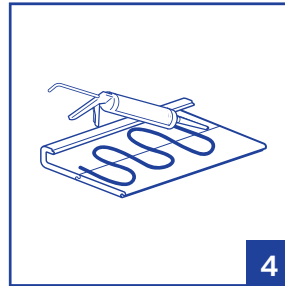
6. Gluing - Risers: Always perform a dry fit before glueing the stair. Start from the top and glue down the vertical front sides first. Use the recommended glue and glue in a wavy motion so enough glue is applied.
7. Attach each floor panel to the corresponding vertical side of each step.
8. Gluing - Treads: Always perform a dry fit before glueing the stair. First of all, glue down the upper staircover. If the floor on the upper level is installed floating, make sure you use an Incizo or other expansion profile to accommodate requirements between the glued down upper staircover and the floating floor. For each step, click all parts together to cover the tread (the staircover and the piece of floor panel) so that one full staircover is formed. Apply glue on the stairbase in a wavy motion and make sure enough glue is applied.
9. Push each staircover against the vertical side. Repeat this for every step.
10. Seams can be finished with a flexible coloured silicone. Avoid walking on it for at least 24 hours to ensure the drying time of the adhesive.

## Staircase with Painted Risers

Below is a list of the installation steps to obtain a correct installation of staircase with painted risers.

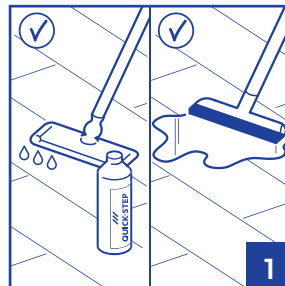


1. Measure the exact shape of each horizontal side of each step.
2. Click together a Stair Cover and a Laminate plank. Saw the full Laminate Stair Cover to size.  
*TIP: chipping can be masked with flexible coloured silicone.*
3. If the bullnose stands out more than 30mm from the riser, an additional plank can be clicked in. We recommend glueing the two planks together using PVA or wood glue, alternatively, tape these two parts together on the backside.



4. Gluing: Always perform a dry fit before gluing the stair. First of all, glue down the upper staircover. If the floor on the upper level is installed floating, make sure you use an Incizo between the glued down upper staircover and the floating floor. For each step, click all parts together to cover the tread (the staircover and the piece of floor panel) so that one full staircover is formed. Apply glue on the stairbase in a wavy motion and make sure enough glue is applied.
5. Seams can be finished with a flexible coloured silicone. Avoid walking on it for at least 24 hours to ensure the drying time of the adhesive.

## Maintenance



1. Maintain your finished staircase in the same way as your Quick-Step Laminate floor with our Quick-Step Floor cleaner. Refer to the Quick-Step Laminate Care and Maintenance Guide available through your place of purchase.

For further information please contact your retailer or visit the below website relevant to your country:

Australia  
[www.quick-step.com.au](http://www.quick-step.com.au)

New Zealand  
[www.quick-step.co.nz](http://www.quick-step.co.nz)

Thank you for your purchase